

Bodenmesswerte

Mühledorf Wald

Saure Braunerde

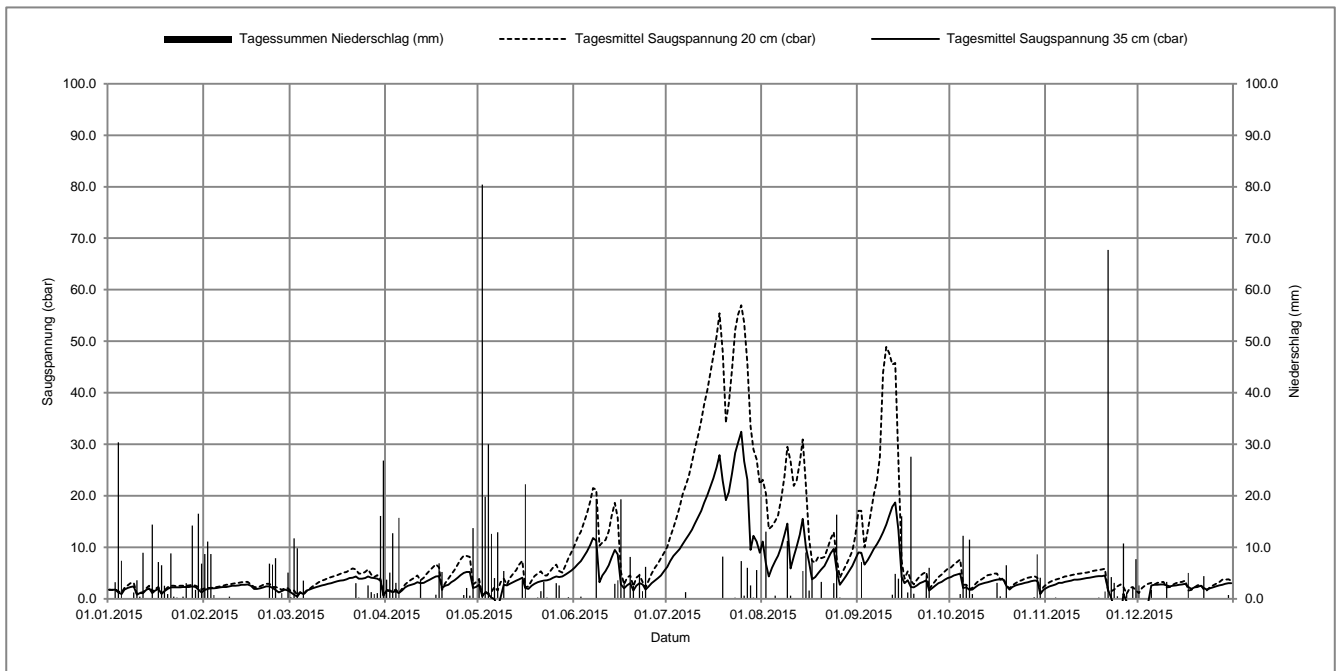
Koordinaten 604033 / 220559, 633 mÜM

mittelschwerer Boden

2015 Tag	Jan		Feb		März		April		Mai		Juni		Juli		Aug		Sept		Okt		Nov		Dez	
	SS35 (cbar)	N (mm)	SS35 (cbar)	N (mm)	SS35 (cbar)	N (mm)	SS35 (cbar)	N (mm)	SS35 (cbar)	N (mm)	SS35 (cbar)	N (mm)	SS35 (cbar)	N (mm)	SS35 (cbar)	N (mm)	SS35 (cbar)	N (mm)	SS35 (cbar)	N (mm)	SS35 (cbar)	N (mm)	SS35 (cbar)	N (mm)
1	1.8	0.0	1.7	8.7	1.2	0.3	1.6	3.7	2.7	4.0	6.1	0.0	6.2	0.0	11.1	0.0	9.0	0.0	4.2	0.0	2.1	0.0	-2.7	2.6
2	1.7	0.0	1.9	11.1	0.8	11.7	1.5	5.1	0.5	80.4	6.7	0.0	7.3	0.0	6.8	13.0	8.9	7.1	4.5	0.0	2.4	0.0	-2.2	0.1
3	1.8	3.2	2.0	8.7	0.4	9.8	1.3	12.7	1.2	19.8	7.3	0.4	8.3	0.0	4.3	0.0	6.6	0.0	4.7	0.0	2.6	0.1	-3.0	0.0
4	1.2	30.4	2.0	0.7	1.2	0.0	1.5	3.1	0.9	30.0	8.2	0.0	8.9	0.0	6.0	0.0	7.5	0.0	4.9	0.9	2.8	0.2	-0.8	0.0
5	0.9	7.4	2.1	0.0	0.9	3.5	1.1	15.7	0.2	12.6	9.2	0.0	9.6	0.0	7.3	0.6	8.5	0.0	2.1	12.2	3.1	0.0	2.6	1.7
6	1.8	0.0	2.2	0.0	1.6	0.0	1.6	0.1	-0.1	4.0	10.4	0.1	10.6	0.0	8.4	0.0	9.7	0.1	2.2	2.5	3.1	0.0	2.7	0.0
7	2.1	0.0	2.3	0.0	1.8	0.0	2.2	0.0	-1.7	12.9	11.8	0.0	11.5	1.3	10.1	0.0	10.6	0.0	1.7	11.5	3.3	0.0	2.7	0.1
8	2.3	0.1	2.3	0.0	2.0	0.0	2.5	0.0	0.2	0.0	11.3	19.4	12.4	0.0	12.4	0.0	11.6	0.0	1.8	0.9	3.4	0.0	2.8	0.1
9	2.4	1.2	2.4	0.4	2.2	0.0	2.7	0.0	2.7	5.4	3.2	0.1	13.4	0.0	14.6	11.2	12.9	0.0	2.3	0.0	3.5	0.0	2.8	0.1
10	0.8	3.6	2.5	0.0	2.4	0.0	2.9	0.0	2.6	0.0	4.5	0.0	14.6	0.0	5.9	0.6	14.4	0.0	2.7	0.0	3.7	0.0	2.6	3.3
11	1.1	0.4	2.5	0.0	2.6	0.0	3.2	0.0	2.9	0.0	5.4	0.0	15.8	0.0	8.2	0.0	16.1	0.0	2.9	0.0	3.7	0.0	2.4	0.1
12	1.1	8.9	2.6	0.0	2.7	0.0	3.0	3.7	3.2	0.0	6.5	0.0	17.1	0.0	10.1	0.0	17.9	0.8	3.1	0.0	3.8	0.0	2.5	0.0
13	1.7	0.0	2.7	0.0	2.9	0.0	3.1	0.0	3.5	0.0	8.0	0.0	18.6	0.0	12.5	0.0	18.7	4.8	3.2	0.0	3.9	0.1	2.6	0.0
14	2.0	0.0	2.7	0.0	3.0	0.0	3.4	0.0	3.8	0.0	9.5	2.9	20.1	0.0	15.5	5.4	13.3	3.9	3.4	0.0	4.0	0.0	2.7	0.0
15	1.1	14.4	2.8	0.0	3.2	0.0	3.7	0.0	4.1	3.6	8.6	3.6	21.7	0.0	10.0	9.0	4.2	16.0	3.6	0.0	4.1	0.0	2.8	0.0
16	1.6	0.0	2.5	0.0	3.4	0.0	4.0	0.0	2.1	22.2	2.8	19.3	23.4	0.0	7.0	1.6	3.0	0.0	3.7	3.1	4.2	0.0	2.9	0.1
17	1.9	7.1	1.9	0.0	3.5	0.0	4.3	0.8	1.9	0.0	2.0	3.0	25.5	0.0	3.8	7.5	3.6	1.2	3.8	0.5	4.3	0.0	2.3	5.0
18	1.0	6.5	1.9	0.0	3.6	0.0	4.4	6.9	2.5	0.0	2.6	0.0	27.9	0.0	4.2	0.0	2.3	27.6	3.7	0.0	4.4	0.2	1.9	0.0
19	1.5	2.5	2.0	0.0	3.8	0.0	2.1	5.2	2.9	0.0	3.0	8.1	22.9	8.2	5.0	0.0	2.2	1.0	2.5	6.5	4.4	0.0	2.2	0.1
20	1.9	0.9	2.2	0.0	4.0	0.0	2.5	0.0	3.2	0.2	1.6	2.5	19.2	0.0	5.7	3.3	2.6	0.0	1.8	0.0	4.5	1.4	2.3	0.0
21	2.2	8.8	2.4	0.0	4.1	0.0	2.7	0.0	3.4	1.5	2.5	0.0	20.7	0.0	6.4	0.0	3.0	0.0	2.3	0.0	1.7	67.7	2.5	0.0
22	2.2	0.4	2.4	6.8	4.3	3.0	3.2	0.0	3.5	3.3	3.0	4.8	24.3	0.0	7.5	0.0	3.3	0.0	2.6	0.0	0.1	4.2	2.1	4.4
23	2.2	0.2	2.1	6.6	3.9	0.2	3.6	0.0	3.6	0.2	2.8	1.5	28.3	0.2	8.8	0.0	3.6	4.5	2.8	0.0	-1.7	3.1	1.8	0.0
24	2.2	0.1	1.7	7.9	3.9	0.0	4.1	0.0	3.8	0.0	1.8	6.2	30.3	0.1	9.7	3.0	1.6	6.0	2.9	0.0	-3.8	0.5	2.0	0.0
25	2.3	0.4	1.2	0.1	4.0	0.0	4.6	0.0	4.1	0.0	2.4	0.0	32.4	7.3	5.5	16.3	2.1	0.0	3.1	0.0	-3.7	0.0	2.2	0.0
26	2.3	3.0	1.5	1.1	4.3	2.6	5.0	0.7	4.3	3.0	3.0	0.0	26.7	0.6	2.7	0.2	2.6	0.0	3.2	0.0	1.0	10.7	2.4	0.0
27	2.3	0.0	1.8	0.0	4.1	1.3	5.2	2.1	4.2	2.6	3.5	0.0	23.1	6.0	3.6	0.0	3.0	0.0	3.4	0.0	-0.6	1.0	2.6	0.0
28	2.4	14.2	1.6	5.1	4.0	0.9	5.2	0.6	4.3	0.0	4.0	0.0	9.5	2.6	4.4	0.0	3.3	0.0	3.5	0.3	-0.8	0.0	2.7	0.0
29	2.3	1.7			3.9	1.1	2.1	13.7	4.7	0.0	4.5	0.0	12.2	0.2	5.4	0.0	3.7	0.0	3.5	8.6	-1.3	2.2	2.9	0.0
30	1.8	16.5			3.5	16.1	2.3	0.0	5.1	0.3	5.4	0.0	11.1	5.6	6.4	0.0	4.0	0.0	0.9	4.1	-2.4	7.7	3.0	0.7
31	1.2	6.8			0.6	26.8			5.5	0.0			8.9	0.0	7.6	0.0			1.7	0.0			3.0	0.1

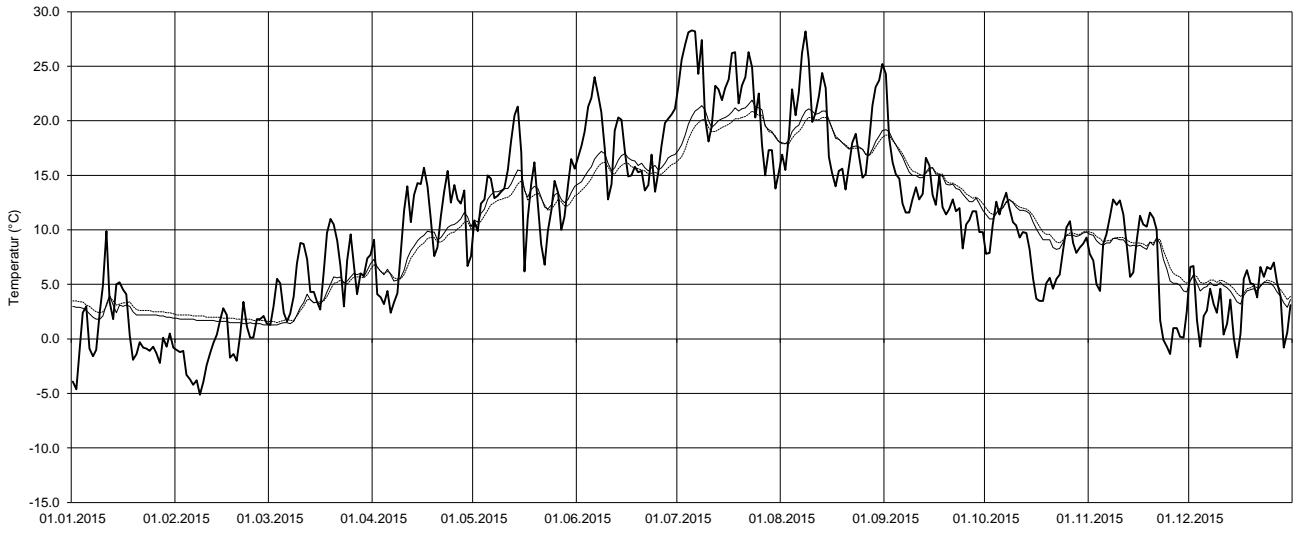
SS35 = Tagesmittelwerte Saugspannung (cbar) in 35 cm Tiefe; N = Tagessummen Niederschlag (mm)

		Jan	Feb	März	April	Mai	Juni	Juli	Aug	Sept	Okt	Nov	Dez
Niederschlag (mm)	Monatssumme	147.4	48.8	80.7	74.0	202.1	71.9	32.1	71.7	73.0	51.1	101.7	18.6
Saugspannung 20 cm (cbar)	Monatssumme	2.1	2.5	3.7	4.4	4.5	9.8	35.0	14.8	15.4	3.8	3.7	2.8
	Maximum	3.2	3.5	6.1	9.5	11.3	30.2	61.5	34.4	52.6	8.5	5.9	4.2
	Minimum	0.2	1.0	0.1	0.2	0.2	0.4	10.0	2.8	0.4	0.3	0.2	0.7
Saugspannung 35 cm (cbar)	Monatssumme	1.8	2.1	2.8	3.1	2.9	5.4	17.7	7.6	7.0	2.9	1.8	2.1
	Maximum	4.4	2.9	4.4	6.0	6.6	14.4	35.9	19.2	20.6	6.2	4.8	3.1
	Minimum	-0.2	0.7	-0.1	0.1	-4.5	0.1	6.3	1.0	0.3	0.4	-4.9	-3.7
Bodentemperatur 20 cm (°C)	Monatssumme	2.5	1.6	4.1	8.7	13.3	16.2	20.2	18.9	14.7	10.4	7.8	4.5
	Maximum	4.3	1.8	7.8	12.8	16.8	18.3	22.8	21.8	19.4	13.1	9.8	6.1
	Minimum	1.7	1.3	1.2	4.6	10.3	13.7	16.8	16.1	11.1	7.8	4.2	2.7
Bodentemperatur 35 cm (°C)	Monatssumme	2.9	1.9	3.9	8.2	12.7	15.4	19.4	18.6	15.0	10.7	8.2	4.9
	Maximum	4.0	2.2	7.0	11.3	14.8	16.8	21.2	20.6	18.9	12.8	9.8	6.1
	Minimum	2.2	1.6	1.5	5.2	10.3	13.3	16.4	16.6	11.9	8.7	5.0	3.5
Lufttemperatur (°C)	Monatssumme	0.8	-0.5	6.1	10.0	13.5	18.0	22.3	19.9	12.6	8.4	6.7	3.4
	Maximum	12.8	7.3	16.5	23.3	28.9	31.1	37.0	36.2	24.2	17.5	16.4	9.5
	Minimum	-5.8	-7.9	-2.1	-1.7	4.1	8.7	10.1	9.1	4.8	1.7	-4.7	-3.8



Temperaturen Mühledorf 2015

— Lufttemperatur — Bodentemperatur 20 cm Bodentemperatur 35 cm



Darstellung der Tagesmittelwerte; Lücken = keine Daten

Bodenmesswerte

Mühledorf Wald

Saure Braunerde

Koordinaten 604033 / 220559, 633 müM

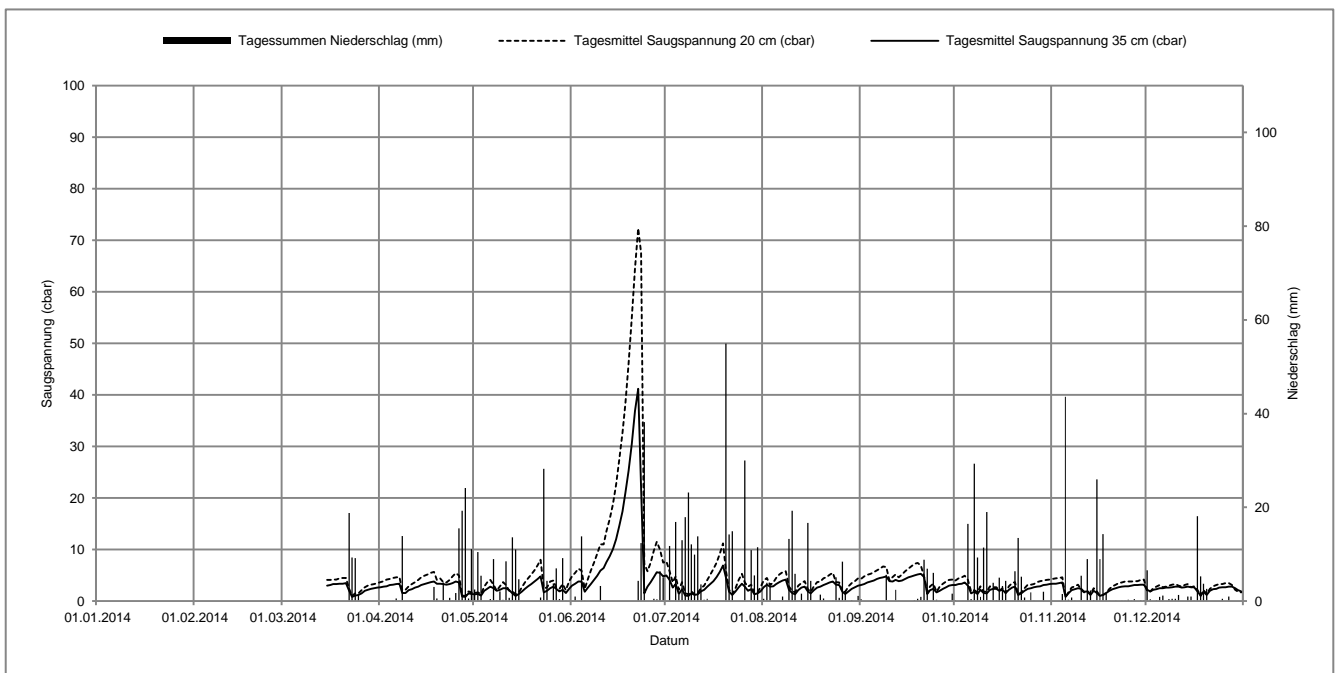
mittelschwerer Boden

2014 Tag	Jan		Feb		März		April		Mai		Juni		Juli		Aug		Sept		Okt		Nov		Dez	
	SS35 (cbar)	N (mm)	SS35 (cbar)	N (mm)	SS35 (cbar)	N (mm)	SS35 (cbar)	N (mm)	SS35 (cbar)	N (mm)	SS35 (cbar)	N (mm)	SS35 (cbar)	N (mm)	SS35 (cbar)	N (mm)	SS35 (cbar)	N (mm)	SS35 (cbar)	N (mm)	SS35 (cbar)	N (mm)	SS35 (cbar)	N (mm)
1	-	-	-	-	-	-	2.7	0.0	1.3	2.5	3.0	0.0	5.0	0.0	2.7	0.5	3.1	0.4	3.1	0.2	3.4	0.0	2.2	6.6
2	-	-	-	-	-	-	2.8	0.0	1.4	10.5	3.4	1.0	4.1	11.8	3.2	3.9	3.3	0.0	3.3	0.0	3.4	0.0	1.9	0.4
3	-	-	-	-	-	-	2.9	0.0	1.1	5.4	3.8	0.0	2.6	0.0	2.8	3.3	3.6	0.0	3.4	0.0	3.5	0.0	2.2	0.0
4	-	-	-	-	-	-	3.1	0.0	2.0	0.0	3.8	13.8	3.3	16.9	2.9	0.0	3.8	0.0	3.6	0.0	3.6	1.5	2.3	0.2
5	-	-	-	-	-	-	3.2	0.1	2.4	0.0	1.8	0.1	1.4	1.4	3.3	0.0	4.0	0.0	3.0	16.5	0.8	43.6	2.5	0.9
6	-	-	-	-	-	-	3.3	0.6	2.8	0.4	2.6	0.0	2.3	13.0	3.7	0.0	4.3	0.0	1.5	0.4	1.5	0.3	2.5	1.2
7	-	-	-	-	-	-	3.4	0.0	2.5	9.0	3.3	0.0	1.1	17.9	4.0	1.0	4.5	0.0	1.8	29.3	2.1	0.8	2.6	0.0
8	-	-	-	-	-	-	1.6	13.9	2.0	0.2	4.1	0.0	1.0	23.2	4.2	0.1	4.6	0.0	1.4	9.3	2.3	0.1	2.6	0.4
9	-	-	-	-	-	-	1.6	0.0	2.2	2.1	4.9	0.0	1.5	12.1	2.2	13.3	4.8	5.6	2.2	0.9	2.5	0.0	2.7	0.5
10	-	-	-	-	-	-	2.1	0.0	2.5	0.3	5.9	3.2	1.2	9.9	1.6	19.3	3.9	0.0	1.6	11.4	2.4	5.4	2.8	0.5
11	-	-	-	-	-	-	2.3	0.0	2.5	8.5	6.4	0.0	1.3	13.8	1.3	5.8	3.8	0.0	1.5	19.0	1.8	0.1	2.8	1.3
12	-	-	-	-	-	-	2.6	0.0	2.1	0.7	7.6	0.0	1.9	3.6	2.1	0.0	4.1	2.4	2.2	0.1	1.9	9.0	2.6	0.0
13	-	-	-	-	-	-	2.8	0.0	1.5	13.6	8.7	0.0	2.2	0.3	2.6	1.6	3.9	0.1	2.4	3.9	1.2	2.3	2.7	0.0
14	-	-	-	-	-	-	3.1	0.0	1.0	11.0	10.1	0.0	2.8	0.5	2.8	0.0	4.0	0.0	2.4	0.2	2.0	0.2	2.8	1.0
15	-	-	-	-	3.0	0.0	3.3	0.0	1.4	4.7	12.0	0.0	3.3	0.0	1.9	16.7	4.3	0.0	2.0	5.0	1.6	26.0	2.7	1.0
16	-	-	-	-	3.1	0.0	3.5	0.0	1.8	0.0	14.6	0.0	3.9	0.0	1.5	4.3	4.6	0.0	2.2	3.2	1.0	9.0	2.7	0.1
17	-	-	-	-	3.3	0.0	3.7	0.0	2.4	0.0	17.4	0.0	4.7	0.0	2.1	0.0	4.8	0.0	1.6	4.3	1.2	14.3	1.9	18.1
18	-	-	-	-	3.3	0.0	3.8	3.0	2.9	0.0	21.0	0.0	5.7	0.0	2.6	0.0	5.0	0.2	2.2	0.0	1.6	1.6	1.1	5.3
19	-	-	-	-	3.4	0.0	3.4	0.6	3.3	0.0	25.3	0.0	6.9	0.0	2.8	1.4	5.2	0.5	2.6	0.0	2.0	0.1	1.8	3.7
20	-	-	-	-	3.4	0.0	3.4	0.0	3.8	0.0	30.5	0.0	4.6	54.9	3.1	0.6	5.3	0.9	2.8	6.4	2.3	0.0	1.2	2.6
21	-	-	-	-	3.5	0.0	3.3	4.0	4.3	0.0	36.9	0.0	1.8	14.2	3.4	0.0	4.7	8.8	1.2	13.5	2.5	0.1	2.0	0.0
22	-	-	-	-	2.0	18.8	3.2	0.0	4.8	0.8	41.2	4.3	1.2	14.9	3.6	0.0	1.4	6.9	1.5	5.2	2.7	0.0	2.3	0.0
23	-	-	-	-	0.8	9.3	3.3	0.7	1.7	28.2	22.0	12.4	1.9	0.0	3.8	0.1	2.1	0.0	2.0	0.8	2.8	0.1	2.4	0.0
24	-	-	-	-	1.1	9.2	3.5	0.1	2.0	4.3	1.5	38.2	2.7	0.0	3.2	5.1	2.4	6.0	2.4	0.0	2.9	0.1	2.6	0.0
25	-	-	-	-	1.2	1.3	3.8	1.7	2.5	0.0	2.8	0.0	3.4	0.0	3.1	0.7	1.7	0.3	2.5	1.9	2.9	0.3	2.7	0.5
26	-	-	-	-	1.5	0.0	3.6	15.5	2.8	3.8	3.7	0.0	2.8	30.0	1.8	8.4	2.0	0.0	2.7	0.1	3.0	0.1	2.7	0.0
27	-	-	-	-	2.0	0.0	0.9	19.3	2.4	7.0	4.7	0.5	2.0	0.0	1.4	2.1	2.4	0.0	2.8	0.0	3.1	0.4	2.8	1.0
28	-	-	-	-	2.2	0.0	0.8	24.1	1.9	0.4	5.6	0.4	2.3	10.9	1.9	0.0	2.7	0.0	2.9	0.0	3.1	0.0	2.8	0.0
29	-	-	-	-	2.4	0.0	1.5	0.6	2.2	9.2	5.5	6.4	1.3	5.5	2.4	0.2	3.0	0.0	3.1	2.0	3.2	0.2	2.5	0.0
30	-	-	-	-	2.5	0.0	1.4	11.1	1.6	0.1	4.8	5.1	1.5	11.5	2.7	0.0	3.1	1.6	3.2	0.0	3.2	0.2	2.1	0.0
31	-	-	-	-	2.6	0.0			2.4	0.0			1.9	0.0	3.0	1.1			3.3	0.0			1.9	0.0

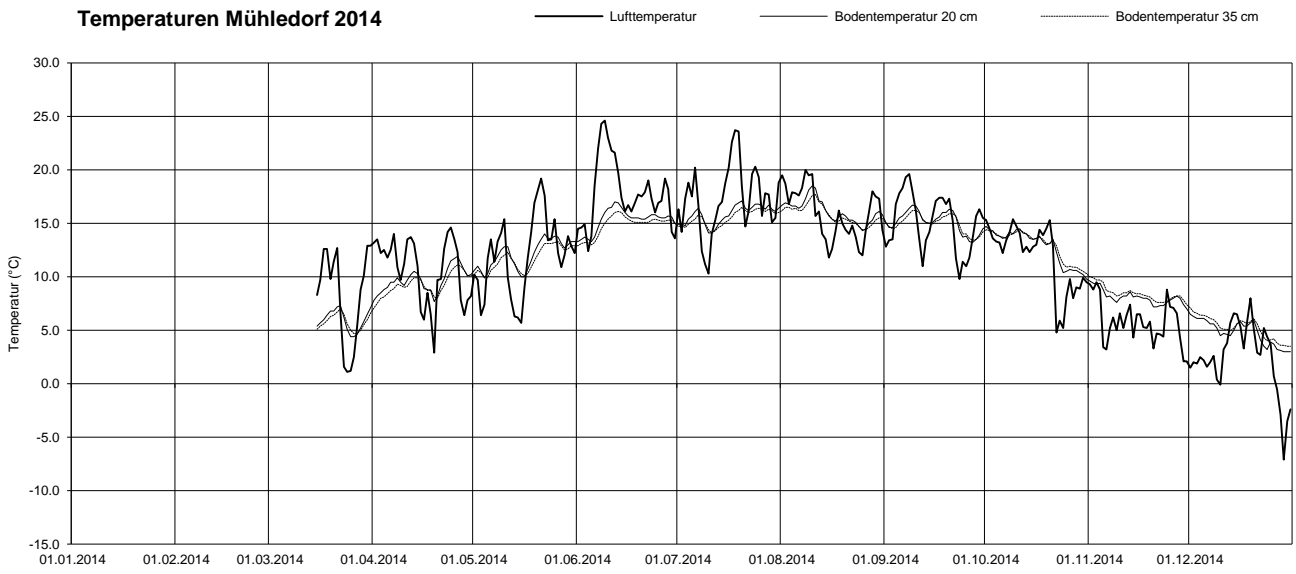
SS35 = Tagesmittelwerte Saugspannung (cbar) in 35 cm Tiefe; N = Tagessummen Niederschlag (mm); ab 15.03.2014 in Betrieb

		Jan	Feb	März	April	Mai	Juni	Juli	Aug	Sept	Okt	Nov	Dez
Niederschlag (mm)	Monatssumme	-	-	(38.6)	95.3	122.7	85.4	266.3	89.5	33.7	133.6	115.8	45.3
Saugspannung 20 cm (cbar)	Monatssumme	-	-	(3.2)	3.9	3.3	20.4	3.9	3.6	4.9	3.0	2.9	2.7
	Maximum	-	-	(4.8)	5.8	8.8	79.6	13.3	7.5	8.1	5.4	4.7	4.2
	Minimum	-	-	(0.1)	0.3	0.4	1.1	0.5	0.0	0.7	0.4	0.2	0.1
Saugspannung 35 cm (cbar)	Monatssumme	-	-	(2.4)	2.8	2.3	10.6	2.7	2.7	3.7	2.4	2.4	2.4
	Maximum	-	-	(3.7)	4.7	5.5	50.5	8.3	5.7	6.5	4.4	3.6	3.3
	Minimum	-	-	(0.1)	-0.1	0.1	0.1	0.2	-0.1	0.6	0.2	0.0	0.1
Bodentemperatur 20 cm (°C)	Monatssumme	-	-	(5.9)	9.7	12.1	15.3	15.8	16.1	15.1	12.8	8.1	4.8
	Maximum	-	-	(8.0)	12.6	14.6	17.6	17.4	19.5	17.4	15.1	9.8	6.9
	Minimum	-	-	(3.9)	7.0	9.2	12.7	13.9	13.8	12.7	9.5	6.8	3.0
Bodentemperatur 35 cm (°C)	Monatssumme	-	-	(5.8)	9.2	11.7	14.8	15.5	15.8	15.0	13.0	8.4	5.3
	Maximum	-	-	(7.2)	11.4	13.5	16.3	16.6	18.0	16.5	14.6	10.2	7.3
	Minimum	-	-	(4.5)	6.8	9.6	12.7	14.0	14.2	13.2	10.2	7.3	3.5
Lufttemperatur (°C)	Monatssumme	-	-	(8.2)	10.7	12.0	17.8	17.3	15.9	15.0	11.9	5.8	2.4
	Maximum	-	-	(19.6)	20.8	25.4	32.9	30.7	26.8	26.1	19.9	12.3	11.1
	Minimum	-	-	(-2.6)	0.1	3.1	8.1	8.5	8.3	4.5	3.0	1.3	-11.2

Station am 15.03.2014 in Betrieb genommen; () = Datengrundlage unvollständig



Temperaturen Mühledorf 2014



Darstellung der Tagesmittelwerte; Lücken = keine Daten